



The National Healthy Start Evaluation

Presentation to the National Health Start Association



Abt Associates Inc.

Presented by
Susanna Ginsburg, Abt Associates

April 30, 2003

Session Objectives

- **To update the National Healthy Start Association Project Directors on the status of the national evaluation effort**

- **To obtain input and guidance regarding potential approach and plans for data collection for the Phase 1 evaluation**

Events Since the Grantee National Data Conference

- Meeting with TEPEHS
- Presentation to SACIM
- Ongoing work to develop design
 - Review of grantee materials including continuation applications
 - Assessment of grantee comments from data meeting
 - Assessment of grantee feedback on the performance measures
 - Assessment of input and guidance from TEPEHS
- Refinements to the evaluation questions and design
- Establishment of listserv for evaluation team, HS program, grantees

TEPEHS Meeting: Issues Discussed

- **Focus of evaluation effort**
- **Emphasis on defining the program while addressing the uniqueness of the grantees' approaches to meeting program objectives**
- **Importance of systems interventions and community base**
- **Need for definitions of the various terms used**
- **Identification of qualitative and quantitative outcomes that can be examined in the evaluation**
- **Need to understand outcomes in the context of implementation**

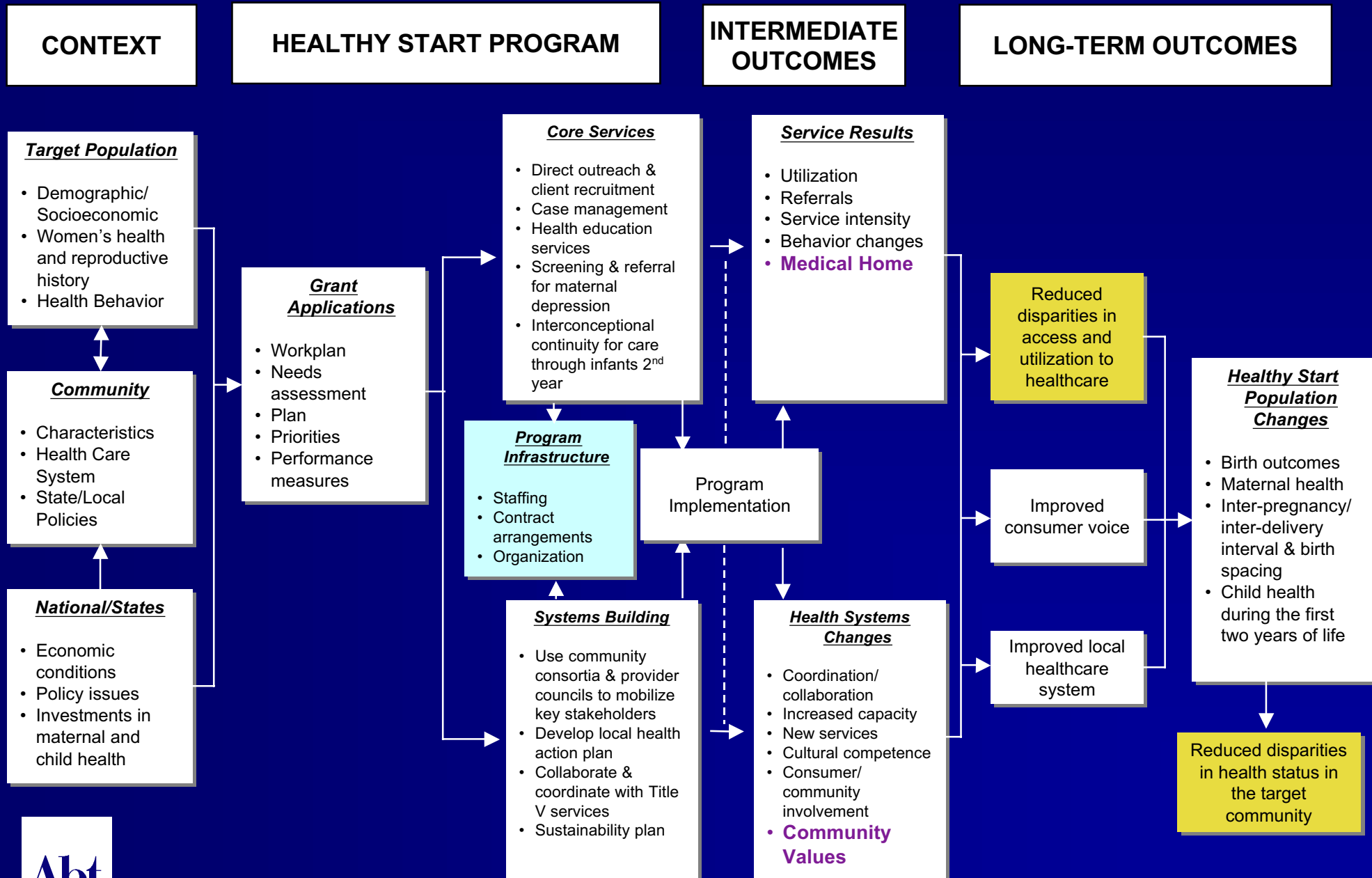
Implications of the TEPEHS Discussions

- The evaluation is the overall national program not individual grantees
- The evaluation is the four year effort: the first phase will report on the entire program (all grantees) at the end of two years and on a subset at the end of four years
 - Report 1: Emphasis on addressing questions 1 and 2 with some preliminary findings on question 3
 - Report 2: Emphasis on Questions 3 and 4
- The evaluation period is this grant cycle but the analysis will need to account for the “starting point” of the 96 Healthy Start grantees

Implications (continued)

- **The logic model needs to be refined to better address outcomes**
- **Data issues are a continuing concern**
 - Lack of consistency of reporting prior to calendar year 03 means we need to rely primarily on 03
 - Survey will therefore be a key source of data
 - Role of performance measures as a source of data for the evaluation needs to be carefully assessed
- **Grantees have played an important role in focusing our efforts**

Logic Model Refinements



Approaches We Will Use

■ Phase 1:

- Profile of 96 Grantees
- Assessment of Implementation (including survey)
- Analysis of Performance Measurement Data

■ Phase 2:

- Synthesis of Local Evaluation Studies
- Analysis of Performance Measurement Data

■ Special Studies

Issues for Discussion

■ The Survey

- Development process and grantee input
- Other aspects of the survey: multiple respondents, descriptive information, grantee assessment

■ Other grantee data

- Existing reports
- Performance Measures (03)
- Calendar 03 continuation application/report

■ Use of the Fall conference

■ Identifying local evaluations for overall evaluation effort

Next steps
